

# EAR DISORDERS

## – FIT FOR TRANSPORT?

### FIT FOR TRANSPORT

- The animal's walk and overall wellbeing are unaffected
- The ear disorder (eg. moderate elephantiasis of the ear) does not affect the animal's navigational ability
- The ear disorder has no open lesions
- Animals with healed ear haematoma. A cauliflower ear has formed without complications.

### FIT FOR CONTINGENT TRANSPORT

Animals with moderate elephantiasis of the ear with minor lesions or animals whose sight is impaired because of the ear disorder must be transported in confinements with extra space and bedding separate from other animals. The animals must be placed separately from the other animals in the pick-up facility for the driver to assess them. Animals that are fit for contingent transport must never be transported via assembly centres.

### NOT FIT FOR TRANSPORT

- Animals with ear haematoma (the skin is stretched and filled with fluid)
- Animals that are unable to walk normally or whose wellbeing is affected

### WHERE IS THE LIMIT?



Pig with ear haematoma. This is the outcome of heavy bleeding in the ear cartilage from blows, bites or scratching against pen equipment. The skin is stretched and filled with fluid. The swelling is painful, but eases off after 1-3 weeks, if the animal gets some rest in a hospital pen.

**Assessment: Not fit for transport**



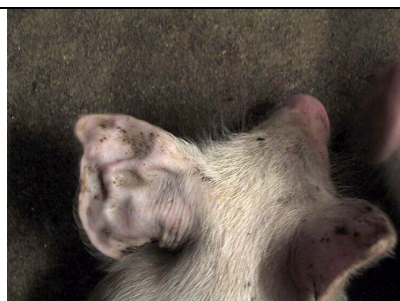
Finisher with elephantiasis of the left ear with no ulcers/lesions. There is a heavy callosity of the ear, which has a doughy texture. Often the condition deteriorates over time. The animal's sight is affected, but its overall wellbeing is normal.

**Assessment: Fit for contingent transport**



Finisher with ear haematoma in the left ear. The swelling is easing off. The pig's wellbeing is normal, but the ear disorder is an open lesion.

**Assessment: Not fit for transport**



Pig with cauliflower ear. A cauliflower ear is the outcome of a healed ear haematoma. The pig's wellbeing is normal and there are no lesions on the ear.

**Assessment: Fit for transport**